

ANNEXURE XV

MINIMUM HOSTEL FACILITY AVAILABLE AS PER MSR

Sr. No	Facility	Available (YES/ NO)	REMARK BRIEF AND SPECIFIC
1.	There should be a separate hostel for the male and female students.	Yes.	
2.	Pantry One pantry on each floor should be provided. It should have water cooler and heating arrangements	Yes.	
3.	Washing & Ironing Space Facility for drying and ironing clothes should be provided on each floor.	Yes.	
4.	Warden's Room Warden should be provided with a separate office room besides her residential accommodation. Intercom facility with College & hospital shall be provided.	Yes.	
5.	Telephone Telephone facility accessible to students in emergency situation shall be made available.	Yes.	
6.	Emergency alarm system in Hostel	Yes.	
7.	Canteen There should be provision for a canteen for the students, their guests, and all other staff members	Yes.	
8.	FDA License Verify Canteen Facility is monitored as per MUHS Circular No. 18/2019 dated – 19/03/2019)	Yes.	
9.	Transport From Hostel to College / Hospital	Yes.	
10.	C.C.T.V Cameras in Hostel	Yes.	
11.	Security Facility in Hostel	Yes.	
12.	Safe Drinking Water in Hostel	Yes.	
13.	Sport & Recreational Activities in Hostel	Yes.	
14.	Anti-Raggings Measures in Hostel	Yes.	
15.	Bio Metric Attendance System in Hostel	Yes.	
16.	Hostel Student Record in Hostel	Yes.	
17.	Cleanliness and hygiene: The hostel is kept clean and hygienic at all times, with regular cleaning and	Yes.	
18.	Daily News Paper & Magazine in Hostel	Yes.	
19.	Visit Register Record by Dean Principal / Teacher and other Concerns authority in Hostel	Yes.	
20.	Hostel Students Parent Meeting minutes Register	Yes.	
21.	Students Health Register in Hostel	Yes.	
22.	The hostel rooms are spacious with natural light and ventilation in Hostel	Yes.	

Jeell
Principal

23	Facility	Available (YES/ NO)	REMARK BRIEF AND SPECIFIC
24	Student is provided with a study table, chair. Wardrobe or Cupboards	Yes.	
25	Available books and Magazines for reading in Hostel	Yes.	
26	Safe disposal of wastes in Hostel	Yes.	
27	Provision For Equipped Sick Room in Hostel	Yes.	
28	Provision For Guest Room in Hostel	Yes.	
29	Laundry facilities: The hostel provides laundry facilities which allows students to wash their clothes and dry it. Yes.	Yes.	
30	Counseling services: The hostels have arrangements for providing counseling and support services to students who may need help with academic, personal, or emotional issues.	Yes.	
31	Gymnasium Facility with Equipment in Hostel	No.	
32	Yoga Meditation Facility in Hostel	Yes.	
33	Health Services To students like Vaccination, An annual medical examination, Free medical care during illness.	Yes.	
34	Provision of Hot water Supply in Hostel	Yes.	
35	Independent Generator Supply capacity (mention in KV)	Yes.	
36	ATM Facilities Near hostel	No.	
37	Secure Wi-Fi internet connectivity through high end firewall and Hi-speed secured browsing in Hostel	Yes.	
38	Provision for Residential Accommodations / Quarters For Teaching and Non-Teaching Staff Mention brief in Remark	Yes.	
39	Feed Back / Compliant Register in Hostel	Yes.	

Accommodation In Hostel

Total No of Students In College		Stay In Hostel	Percentage	Day Scholar	Percentage	Make a Clear Remark about hostel utilization
Boys	2	0	0	2	40%	
Girls	3	0	0	3	60%	
Total	5	0	0	5	100%	
Average Percentage	⇒	Hostel=0		Day Scholar = 100%		

all
Principal

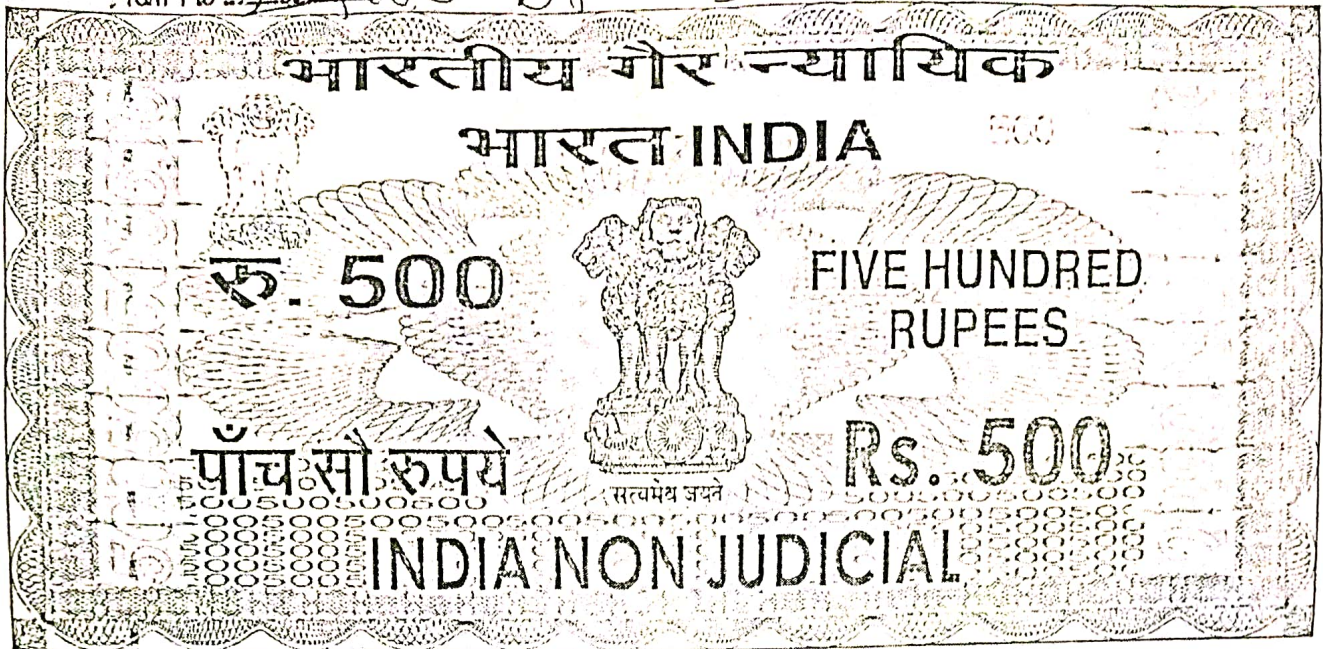
Shivshakti Nursing Institute(Bsc)
Kata Road Washim Tq. Dist. Washim

Certified that this Document:

/Affidavit contains Pages

From 1 to

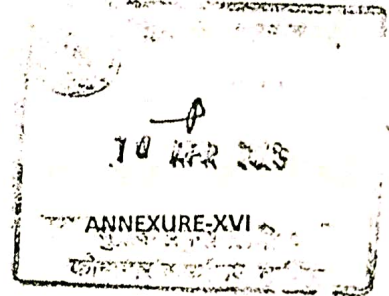
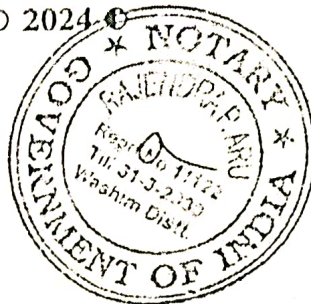
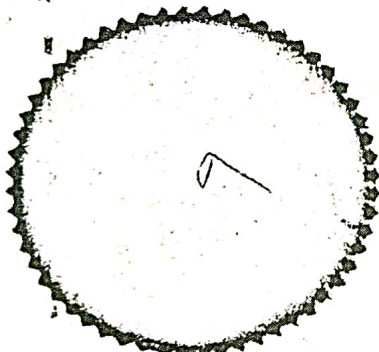
2 of 13.4.2022



महाराष्ट्र MAHARASHTRA

2024

DM 570243



DECLARATION

I, the Dean / Director/ Principal of the Ms Renuka Y. Bhosale Shivshakti Nursing Institute College / Institute solemnly states on affirmation, that the information provided by me in Inspection Format as well as uploaded on College Website along with all Annexure is true and correct to my knowledge & Belief. The said information is provided to me by the concerned teachers and duly verified by me. It is further submitted the teachers information attached in respective Annexure-VI & VII are not working in /at any other College /Institute or presented themselves at any inspection for the Academic Year 2021..2022., as per my knowledge and information provided by the concerned teachers. The teachers in the Annexure-VI & VII are staying in the same city/town/village where the College / Institute is situated or adjacent to the city/town/village, where the College/Institute is situated and having the valid proof of residence of the said city/town/village. The teachers in the Annexure-VI & VII are not practicing in College working hours or out-side the City where the College /Institute is situated.

Jeelle
Principal

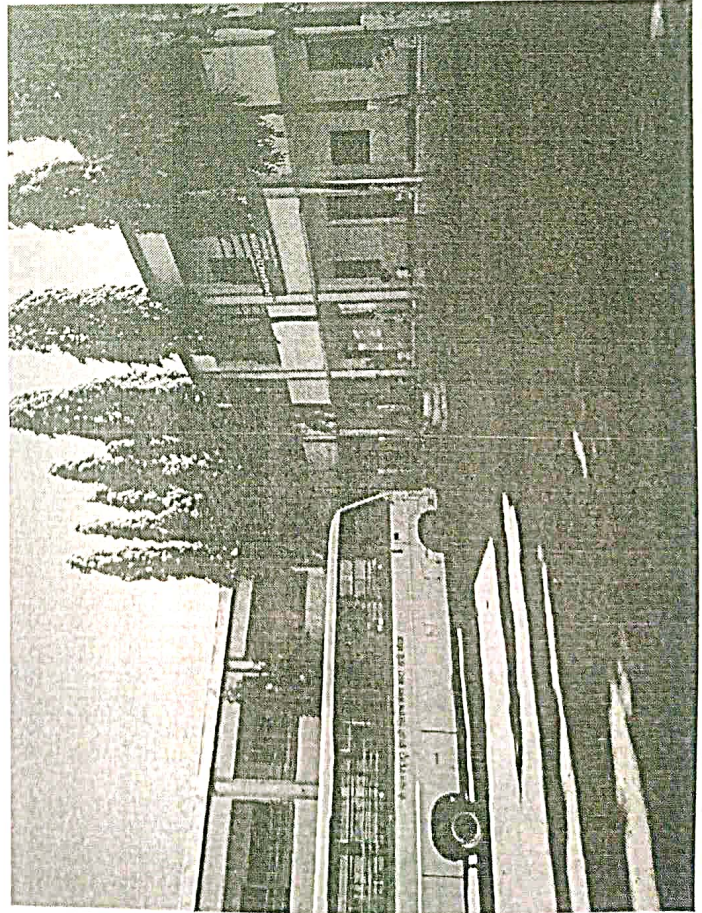
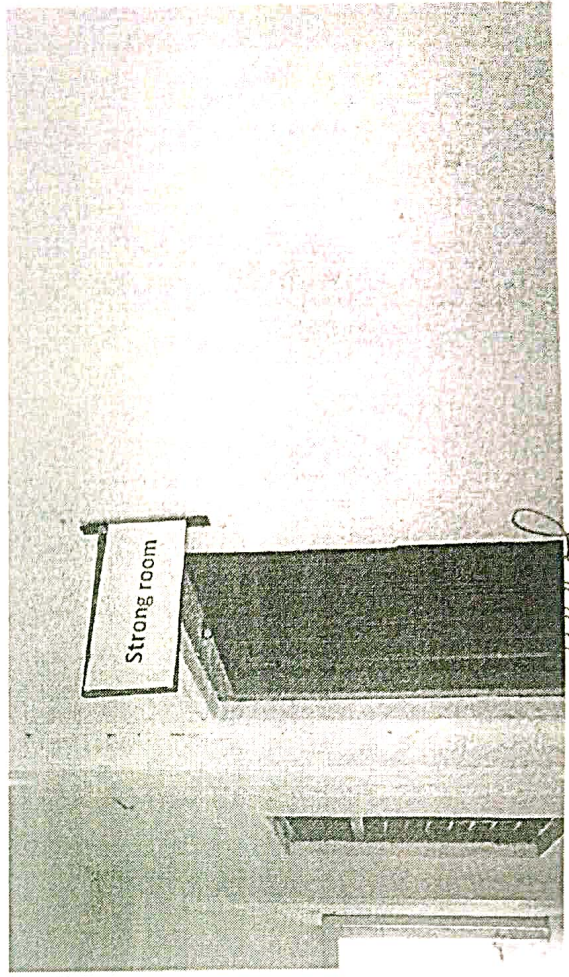
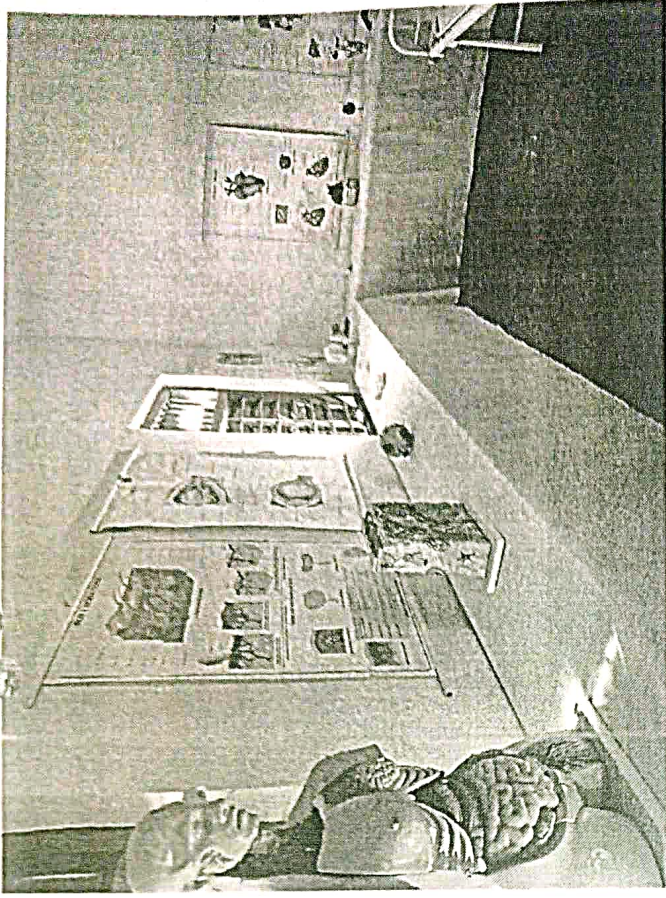
Shivshakti Nursing Institute (Bsc)
Kata Road Washim Tq. Dist. Washim



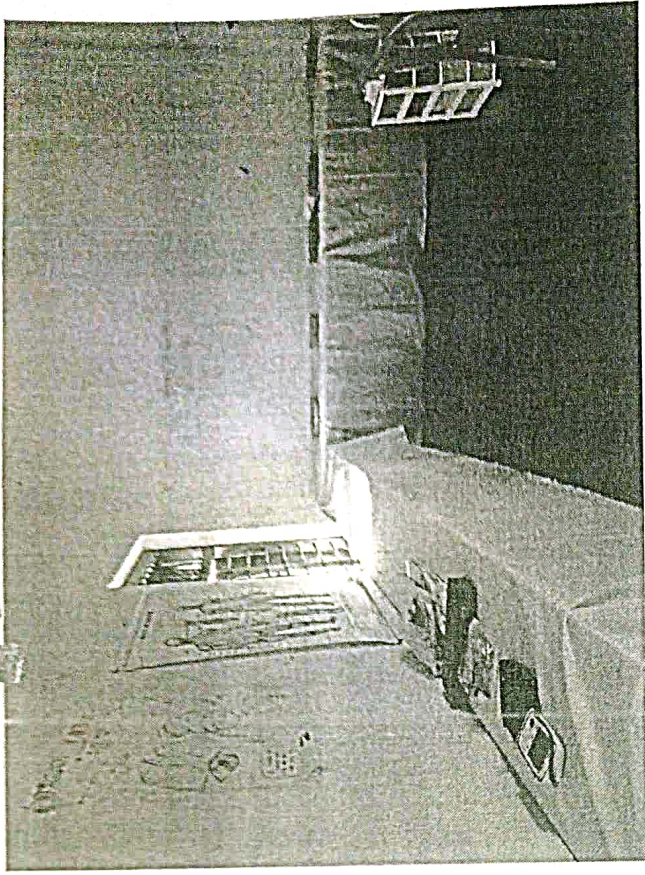
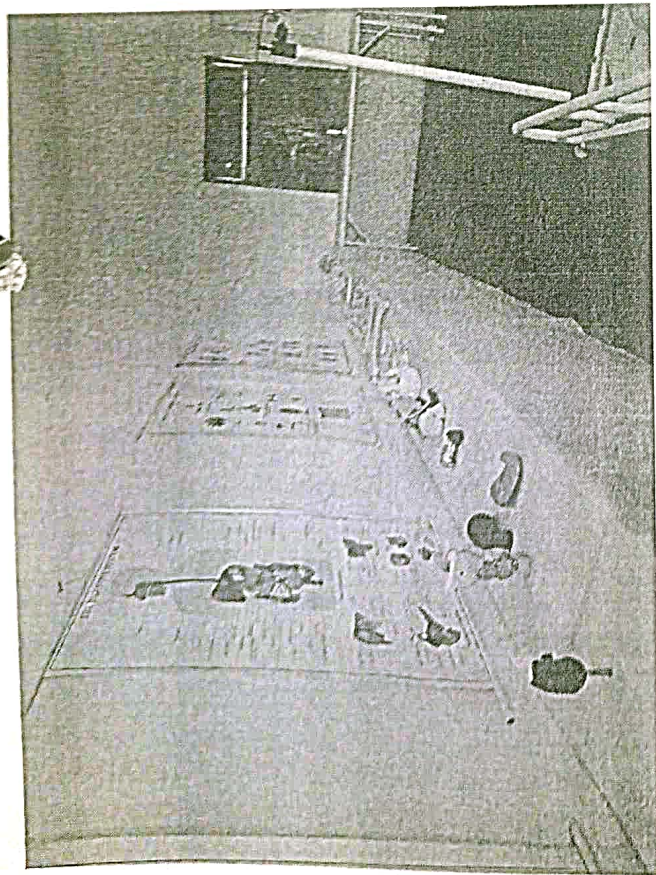
Shot on OnePlus
By Vinod G



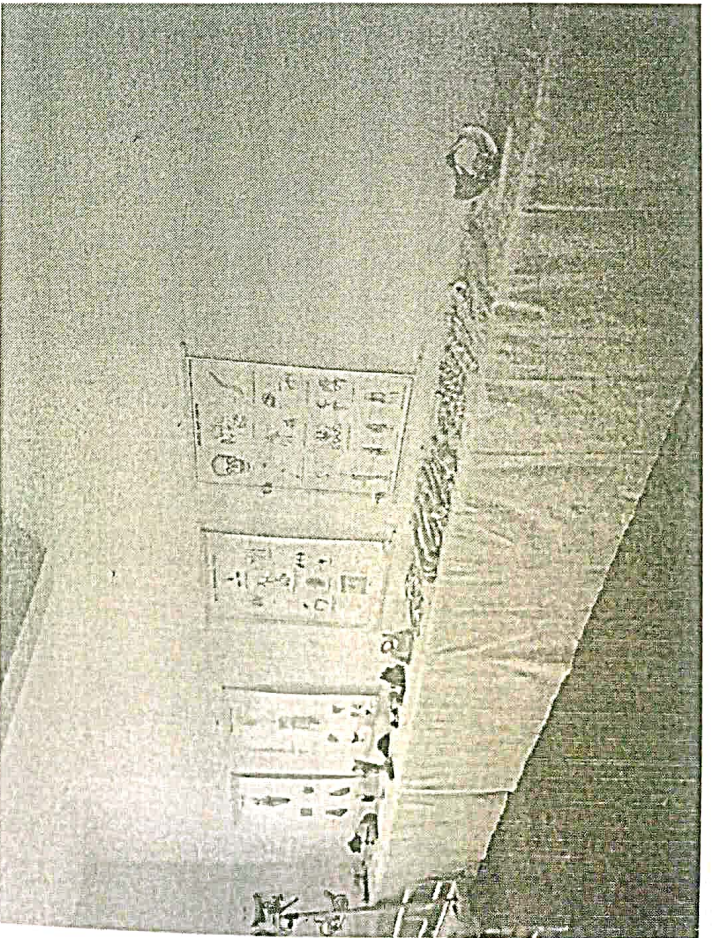
Principal
Shivshakti Nursing Institute(Bsc)
Kata Road Washim Tq.Dist.Washim



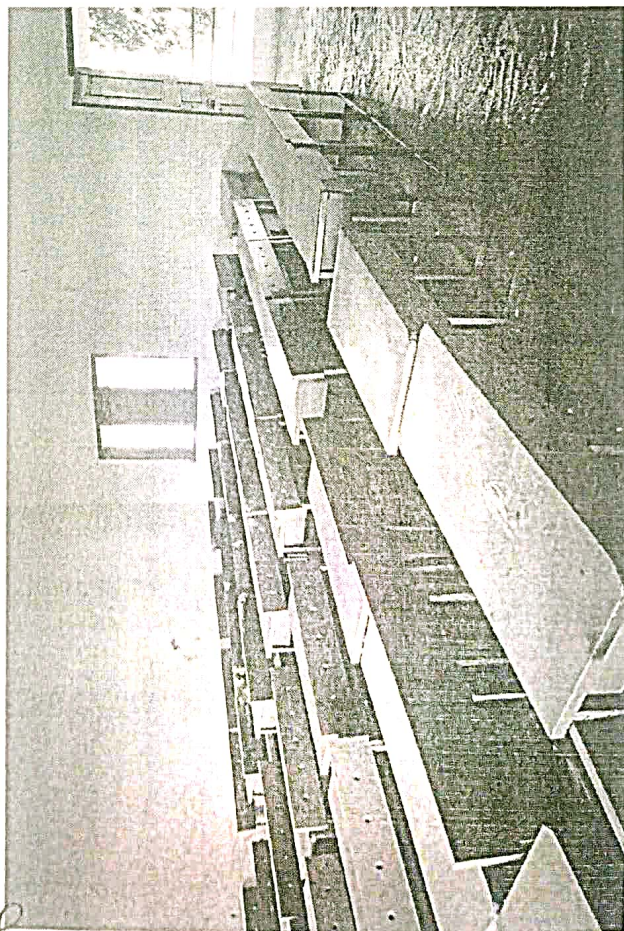
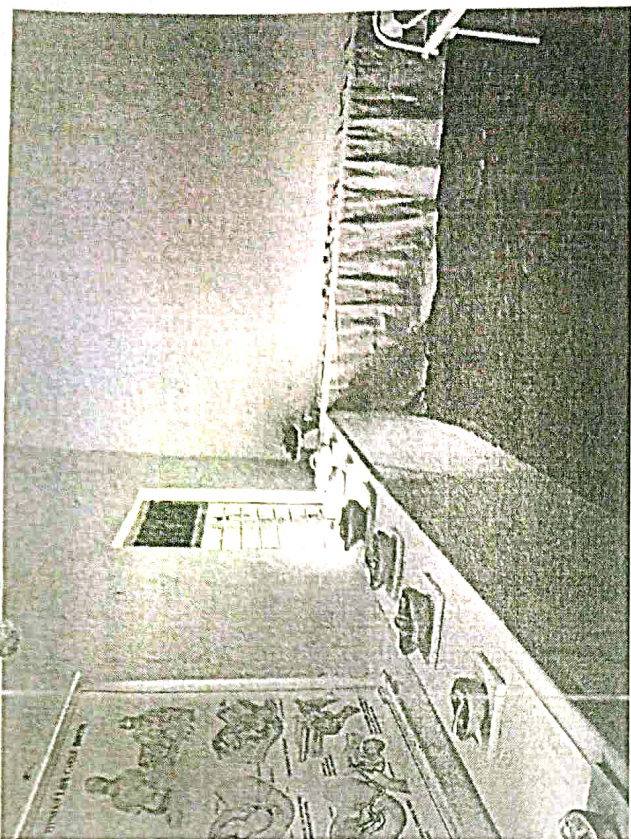
Principal
Shivshakti Nursing Institute(Bsc)
Kata Road Washim Tq. Dist. Washim



Deep
Principal
Shivshakti Nursing Institute (Bsc)
Kata Road Washim Tq. Dist. Washim



Jeetu
Principal

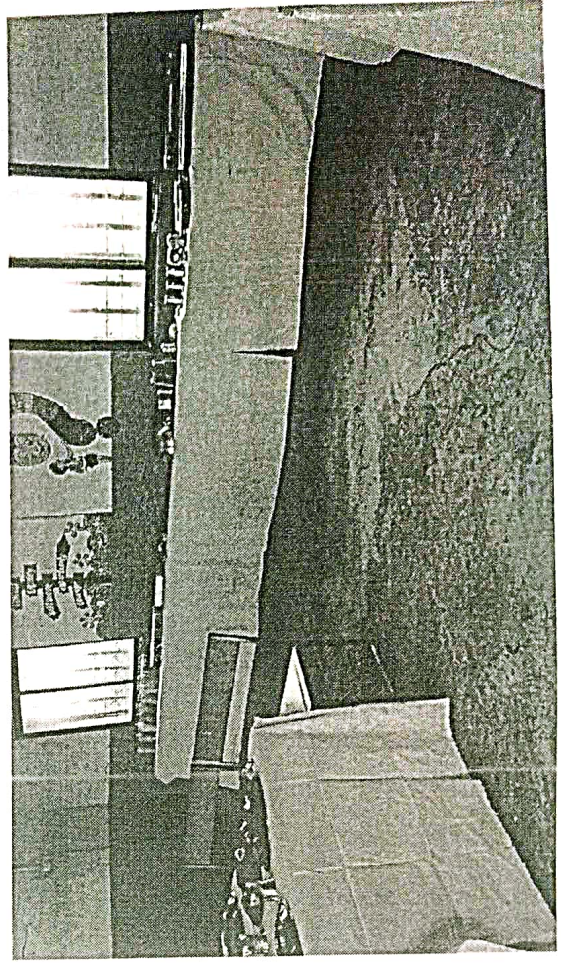


Deep

Principal
Shivshakti Nursing Institute(Bsc)
Kata Road Washim Tq.Dist.Washim



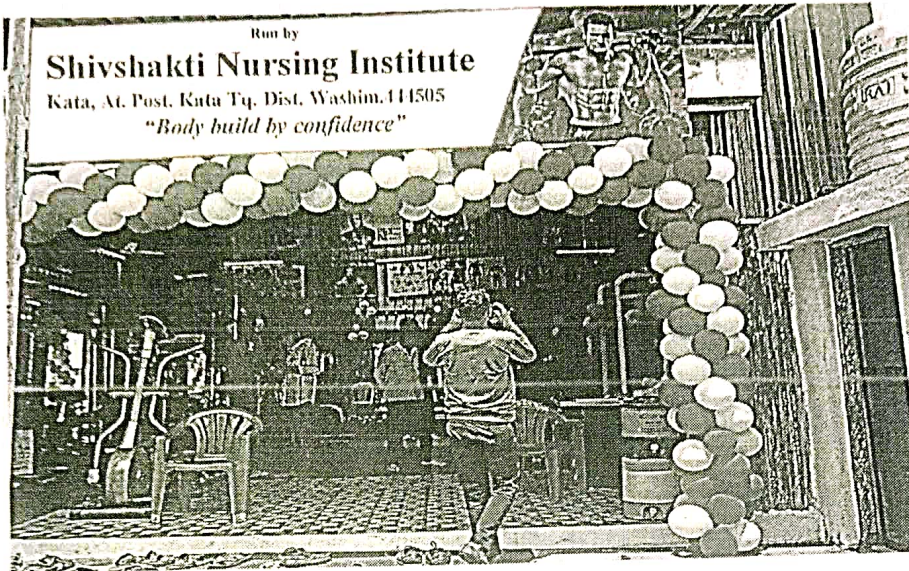
Shree
Principal
Shivshakti Nursing Institute(Bsc)
Kata Road Washim Tq. Dist. Washim



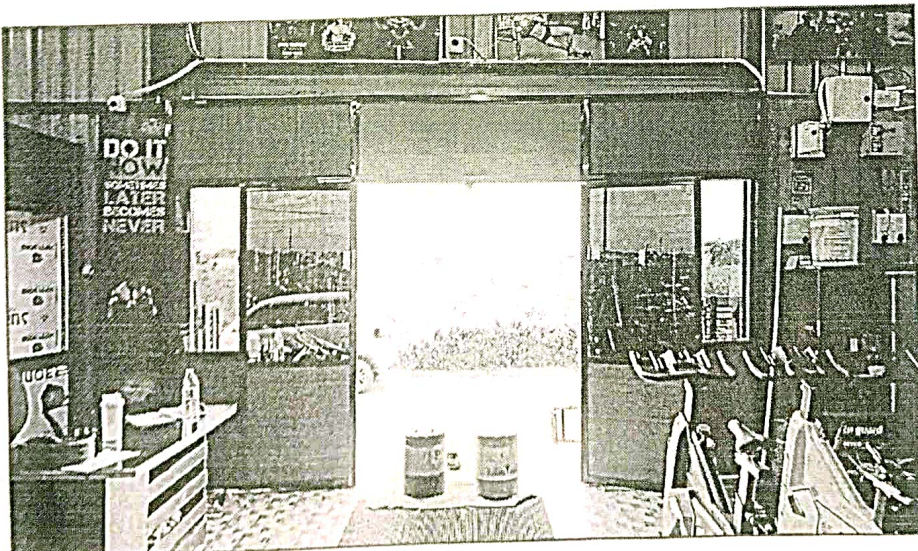
Gymnasium facilities: (A.Y. 2025-2026)

Shivshakti Nursing Institute, B.Sc. Nursing, Kata, Washim Tq. Dist. Washim 444505 (155172) as per norm we have established new Gym for student of B.Sc. Nursing. The Gymnasium Facilities Photo Captured by Camera shows below.

1) Photo: WEL-COME



2) Photo:



Jell
Principal
Shivshakti Nursing Institute(Bsc)
Kata Road Washim Tq.Dist.Washim